



## DIAGNOSTIC TECHNIQUES

# DEEP SKIN SCRAPING

### CONTENTS

WHEN DO I DO IT? : 3.1

WHAT CAN I FIND? : 3.1

WHAT DO I NEED? : 3.1

TECHNIQUE IMAGES : 3.2

HOW DO I DO IT? : 3.3

TIP : 3.3

### WHEN DO I DO IT?

- In cases of suspected demodicosis (non-inflammatory alopecia, comedones, pustules, crusts, inflammatory alopecia)

### WHAT CAN I FIND?

- *Demodex* mites, including juvenile forms and eggs → more than one mite is diagnostic

### WHAT DO I NEED?

- Slides, cover slips, scalpel blade, mineral oil, microscope.

**SKIN SCRAPING EQUIPMENT VIDEO:** [ExcellenceInDermatology.com](http://ExcellenceInDermatology.com) → [Education Library](#) → [Videos](#)

## TECHNIQUE IMAGES : DEEP SKIN SCRAPING



Dog with demodicosis: inflammatory alopecia, hyperpigmentation (Courtesy: S. Bettenay)



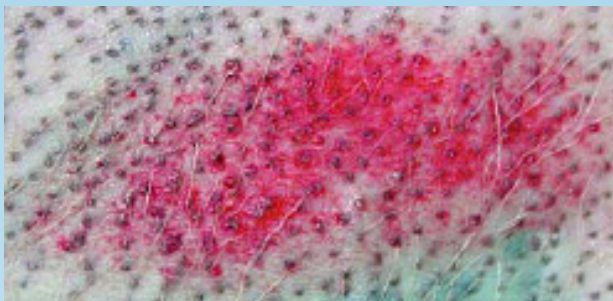
Focal alopecia due to demodicosis, puppy (Courtesy: F. Albanese, F. Leone)



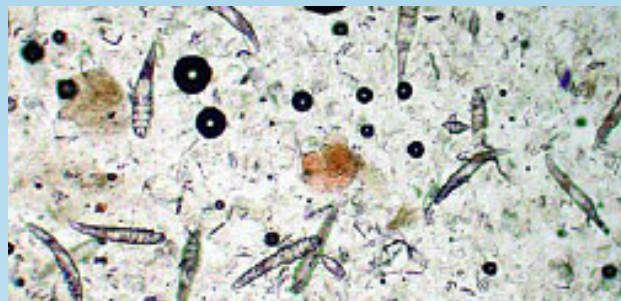
Squeeze skin prior to scraping (Courtesy: S. Bettenay)



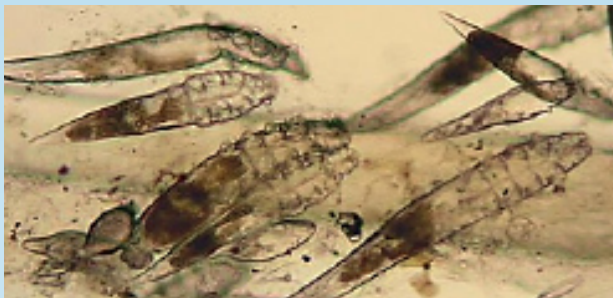
Scrape until light capillary oozing is observed (Courtesy: S. Bettenay)



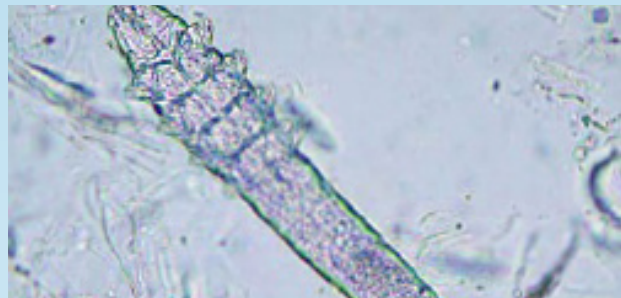
Excoriation after deep skin scraping (Courtesy: F. Albanese, F. Leone)



*Demodex* mites, adults and juvenile forms (Courtesy: F. Albanese, F. Leone)



*Demodex* mites, larvae and eggs (Courtesy: T. Nuttall)



*Demodex canis* (Courtesy: S. Bettenay)

---

## HOW DO I DO IT?

---

- If necessary, clip 1cm<sup>2</sup> of the area you want to scrape to remove hairs
- Squeeze the skin prior to scraping to push the mites out from the depths of the hair follicles
- Scrape the skin in the direction of hair growth with a blade or spatula covered with mineral oil until capillary bleeding is observed
- Put the material on the slide
- Place a cover slip onto the sample and evaluate microscopically, using the 4x or 10x objective with the microscope condenser moved down.

**SKIN SCRAPING PROCEDURE VIDEO:** [ExcellenceInDermatology.com](#) → [Education Library](#) → [Videos](#)

---

## TIP

---

- Feet and face are hard to scrape → Trichogram may give equivalent results if 1cm<sup>2</sup> of hairs is sampled.
- Some breeds (e.g. Shar Pei) are hard to scrape and a skin biopsy may be needed to make a diagnosis.